

PARTS CATALOG

Super G3 FAX Board-T1

Canon

Oct 12 2005

PREFACE

This Parts Catalog contains listings of parts used

Diagrams are provided with the listings to aid the service technician in identifying clearly, the item to be ordered.

Whenever ordering parts, consult this Parts Catalog for all of the information pertaining to each item. Be sure to include, in the Parts Request, the full item description, the item part number, and the quantity.

COPYRIGHT (C) 1999 CANON INC.

Use of this manual should be strictly supervised to avoid disclosure of confidential information.

Contents

NUMERICAL INDEX

Super G3 FAX Board-T11-1

Super G3 FAX Board-T1

XA ASSEMBLY LOCATION DIAGRAM2-1
X01 PACKING KIT2-2
X90 FAX BOARD PCB ASSEMBLY2-4

NUMERICAL INDEX

Super G3 FAX Board-T1

PARTS NUMBER	FIGURE & KEY NO.	PARTS NUMBER	FIGURE & KEY NO.	PARTS NUMBER	FIGURE & KEY NO
FB5-9410-000	X01 - 1				
FC6-4499-000	X01 - 3				
FC6-4500-000	X01 - 4				
FK2-0949-000	X01 - 8				
FK2-1063-000	X01 - 2				
FK2-1232-000	X90 - 6				
FK2-1265-000	X90 - 1				
FK2-1327-000	X90 - 6				
FM2-2790-020	X90 - 2				
FM2-4057-000	X01 - 7				
FM2-4434-000	X01 - 5				
FM2-4435-000	X01 - 9				
FM2-4436-000	X01 - 11				
FM2-4538-000	X01 - 12				
FM2-4540-000	X90 - 3				
FM2-4772-000	X90 - 4				
FM2-4777-000	X90 - 4				
HH2-2824-000	X01 - 13				
HK1-0544-000	X01 - 14				
HK1-0547-000	X01 - 15				
HK1-0551-000	X01 - 16				
HK1-0559-000	X01 - 14				
NPN	X01 -				
NPN	X90 -				
WE8-5841-000	X01 - 10				
WE8-5841-000	X90 - 5				
WG8-5696-000	X01 - 6				
XB6-7300-805	X01 - 501				
XB6-7300-805	X90 - 501				

Super G3 FAX Board-T1

Super G3 FAX Board-T1

US	F68-0101-000
EUR	F68-0102-000
AU	F68-0103-000
ASIA	F68-0104-000
CN	F68-0105-000
KR	F68-0106-000
TW	F68-0107-000

Contents

XA	ASSEMBLY LOCATION DIAGRAM	2-1
X01	PACKING KIT	2-2
X90	FAX BOARD PCB ASSEMBLY	2-4

FIGURE XA ASSEMBLY LOCATION DIAGRAM

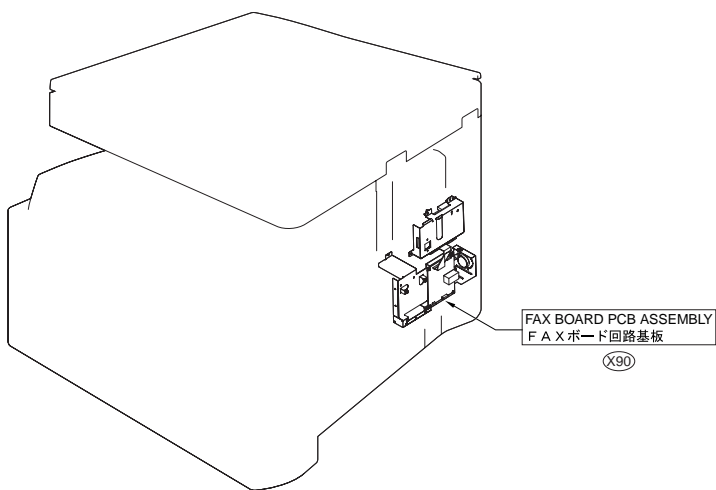


FIGURE X01 PACKING KIT

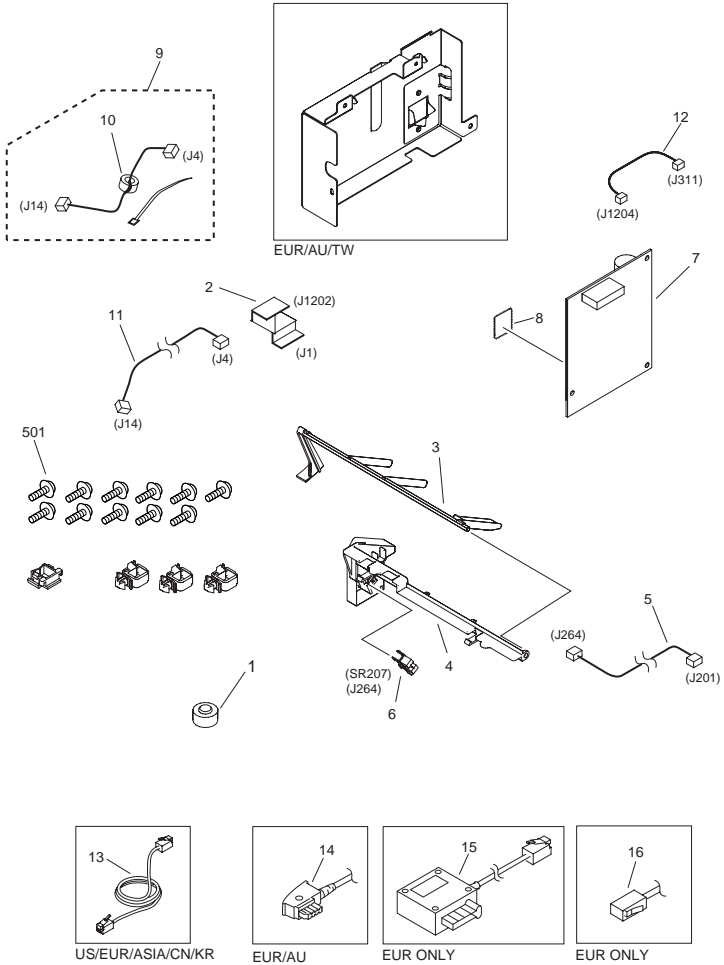


FIGURE & KEY NO.	PARTS NUMBER	R A N K	Q'TY	DESCRIPTION	SERIAL NUMBER/ REMARKS	S V C
Fig.X01	NPN		RF	PACKING KIT		
1	FB5-9410-000		1	STAMPER		
2	FK2-1063-000		1	CABLE, FLAT, MODEM	J1,1202	
3	FC6-4499-000		1	LEVER, SENSOR		
4	FC6-4500-000		1	HOLDER, SENSOR		
5	FM2-4434-000		1	CABLE, SENSOR	J201,264	
6	WG8-5696-000		1	PHOTO INTERRUPTER, TLP1243	SR207 J264	
7	FM2-4057-000		1	MODEM PCB ASSEMBLY		
8	FK2-0949-000		1	IC,UPD65942GC-Y24, GATE ARRAY		
9	FM2-4435-000		1	CABLE, MODEM	J1201,1921	
10	WE8-5841-000		1	CORE, RING		
11	FM2-4436-000		1	CABLE, NCU	J4,14	
12	FM2-4538-000		1	CABLE, IP	J311,1204	
13	HH2-2824-000		1	MODULAR CORD, 2P	US/EUR/ASIA/CN/KR	
14	HK1-0559-000		1	MODULAR CORD	AU ONLY	
14	HK1-0544-000		1	MODULAR CORD	EUR ONLY	
15	HK1-0547-000		1	MODULAR CORD	EUR ONLY	
16	HK1-0551-000		1	MODULAR CORD	EUR ONLY	
501	XB6-7300-805		11	SCREW, BH3X8		

FIGURE X90 FAX BOARD PCB ASSEMBLY

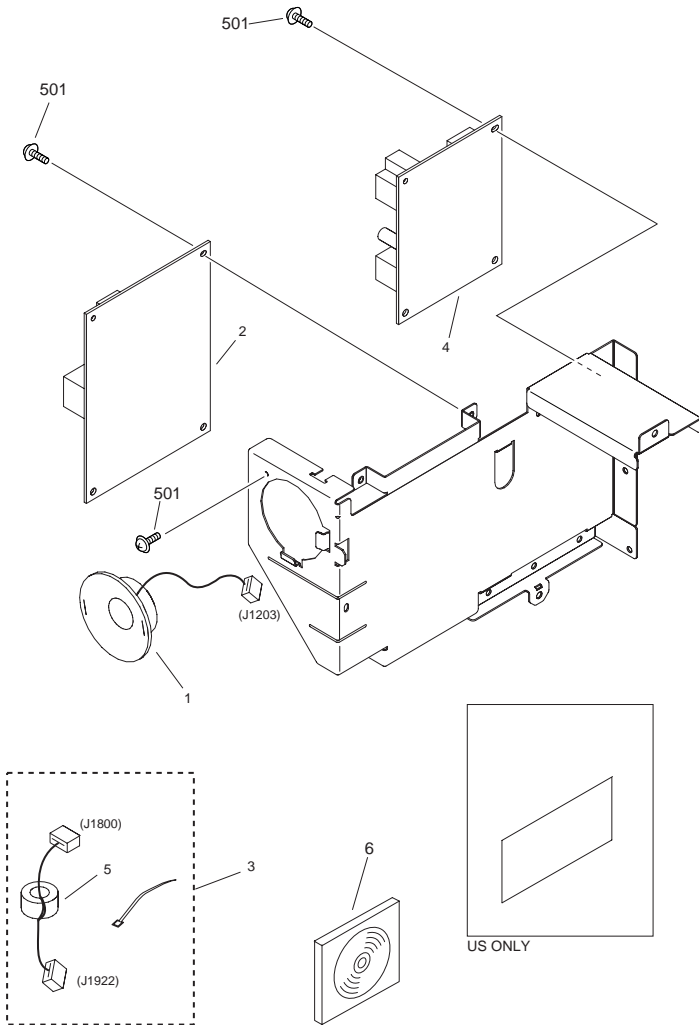


FIGURE & KEY NO.	PARTS NUMBER	RANK	Q'TY	DESCRIPTION	SERIAL NUMBER/REMARKS	SVC
Fig.X90	NPN		RF	FAX BOARD PCB ASSEMBLY		
1	FK2-1265-000		1	SPEAKER	J1203	
2	FM2-2790-020		1	NCU PCB ASSEMBLY		
3	FM2-4540-000		1	CABLE, NCU		
4	FM2-4772-000		1	MODULAR PCB ASSEMBLY	EUR/AU/ASIA/CN/TW	
4	FM2-4777-000		1	MODULAR PCB ASSEMBLY	US/KR	
5	WE8-5841-000		1	CORE, RING	J1800,1922	
6	FK2-1327-000		1	CD-ROM, FAX DRIVER	CN/KR	
6	FK2-1232-000		1	CD-ROM, FAX DRIVER	US/AU/ASIA/CN/KR	
501	XB6-7300-805		16	SCREW, BH3X8		

Prepared by
OIP HFE Promotion Center
CANON INC.

Canon